



Multi-layer design | versatile barrier | ideal handling

Multi-layer amniotic soft tissue barrier for protection during the critical stage of healing

key advantages

An ideal solution for acutely traumatized nerves and soft tissue

Avive+™ keeps adjacent tissues separated, which may reduce the potential for the development of neuritis and impaired nerve function.¹

Avive+ acts as a barrier to soft tissue attachments and reduces the potential of nerve tethering.¹

An ideal resorbable protection technology

In animal studies, Avive+ is present for at least 16 weeks during the critical phase of tissue repair.



Retains
inherent **structure**
and **properties**
of the amniotic
membrane



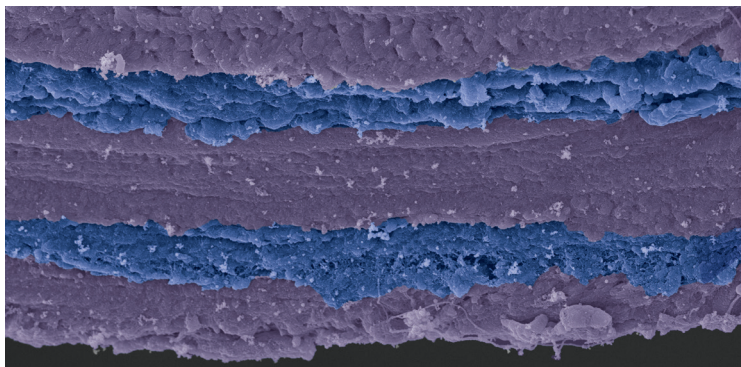
Easy to use
with **ideal**
handling and the
ability to reposition
in the surgical bed



Layered
design creates a
unique barrier,
double sided with
epithelial cells

Epithelial cells on both sides for easy placement

Alternating layers of amnion and chorion create a **multi-layer design** with the epithelial layer of the amnion facing out on both sides, allowing for non-side-specific placement.



Scanning electron microscope (SEM) image of the layered alternating tissue design

Purple represents Amnion layers
Blue represents Chorion layers

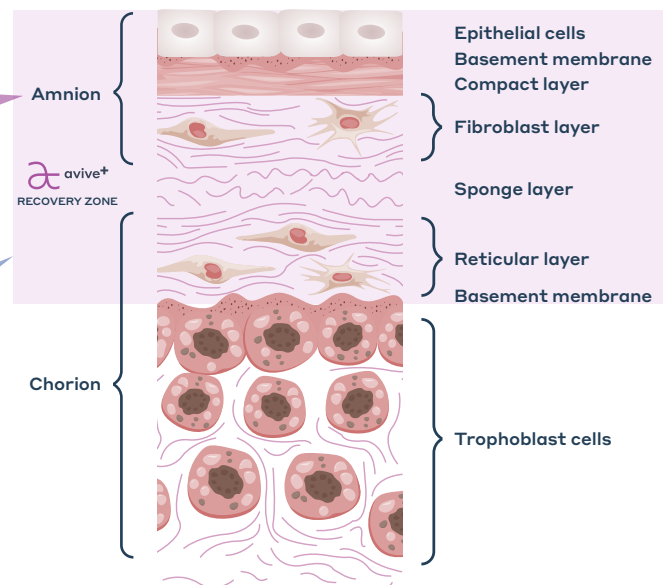
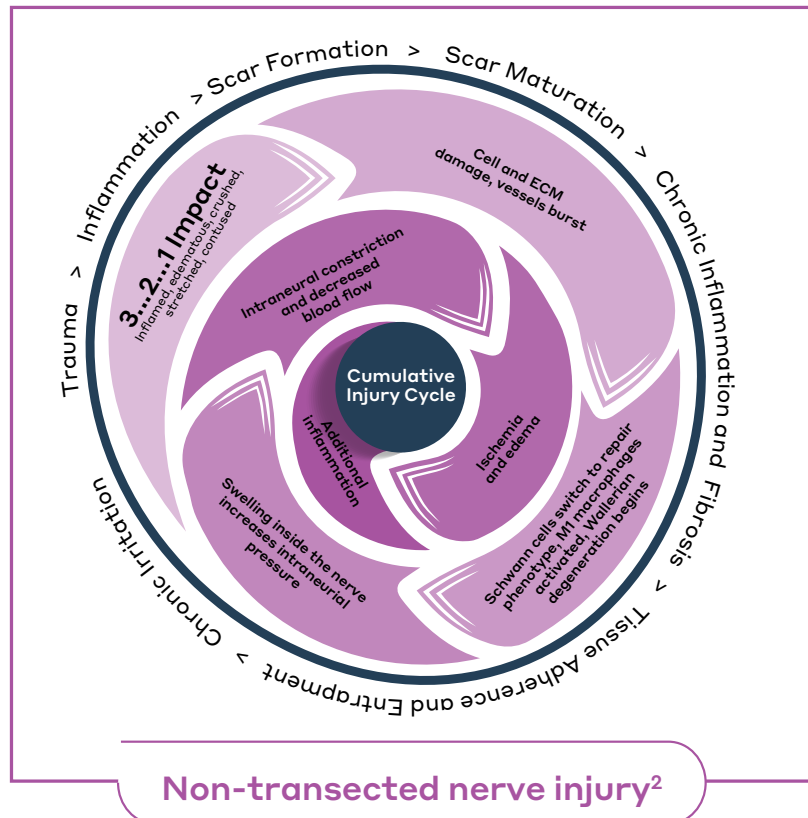


Illustration adapted from: Uchida et al. *Mediators Inflamm.* 2012; 2012: 270670.

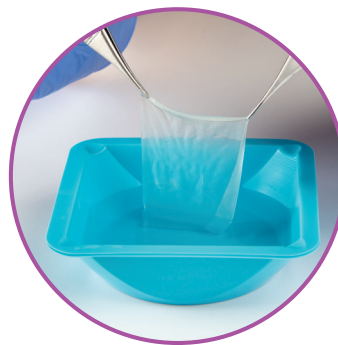
Trauma and surgical procedures can often lead to peripheral nerve injuries, but an intact epineurium can hide what's really going on. Protect nerves from further injury and break the cycle with **Avive⁺**.



Frequent applications for Avive⁺:

- Acutely traumatized nerve and surrounding tissue
- Gunshot trauma exposing nerve
- Crushed non-transected nerve injury
- Bruised nerves
- Staged procedures with nerve exposure
- Tendon injuries or tenolysis
- Nerve sparing bulk tissue removal (benign conditions)

Code	Dimensions
CA2020	2 cm x 2 cm
CA2040	2 cm x 4 cm
CA3060	3 cm x 6 cm



references

1. Data on file.
2. Illustration adapted from: Lundborg G, Myers R, Powell H. 1983. Nerve compression injury and increased endoneurial fluid pressure: a "miniature compartment syndrome". *J Neurol Neurosurg Psychiatry*. Dec; 46:1119-1124

indications and trademark disclaimers

Avive⁺ Soft Tissue Matrix™

REGULATORY CLASSIFICATION: Avive⁺ Soft Tissue Matrix allograft is processed and distributed in accordance with U.S. FDA requirements for Human Cellular and Tissue-based Products (HCT/P) under 21 CFR Part 1271 regulations, and U.S. State regulations.

Axogen Corporation is accredited by the American Association of Tissue Banks (AATB). Avive⁺ Soft Tissue Matrix is to be dispensed only by or on the order of a licensed health professional.

INTENDED USE: Avive⁺ Soft Tissue Matrix is processed amniotic membrane intended for use as a soft tissue barrier. The allograft may be used in numerous clinical applications, including covering the peripheral nerve to separate and protect the nerve from the surrounding environment.

CONTRAINDICATIONS: Avive⁺ Soft Tissue Matrix is contraindicated for use in any patient in whom soft tissue implants are contraindicated. This includes any pathology that would limit the blood supply and compromise healing or evidence of a current infection.

visit our
website
for more
information



Axogen Corporation: Phone 888.Axogen1 (888.296.4361) | Fax 386.462.6801 | customer@axogeninc.com | www.axogeninc.com

© 2024 Axogen Corporation. The stylized "a" logo and Axogen are registered trademarks of Axogen Corporation. Avive⁺ and Avive⁺ Soft Tissue Matrix are trademarks of Axogen Corporation. MAT-US-AVIV-0002